

ChtISMa trading Ltd
Limassol - Cyprus

**HEAVY DUTY SINGLE SEAL
COVER & FRAME
SERIES CRC**

**CLASS C250
EN 124 : 1998**

DESIGN FEATURES:

Material:

Spheroidal graphite cast iron
(Ductile Iron)

Design Load:

250KN

Suitable for group four areas:
Carriageways of roads, hard
shoulders and parking areas,
for all types of road vehicles

Coating:

Bituminous black paint.

Markings:

Written on the bottom of
the cover and on the frame.

EN124 C250

DIMENSIONS

Special features:

Cover:

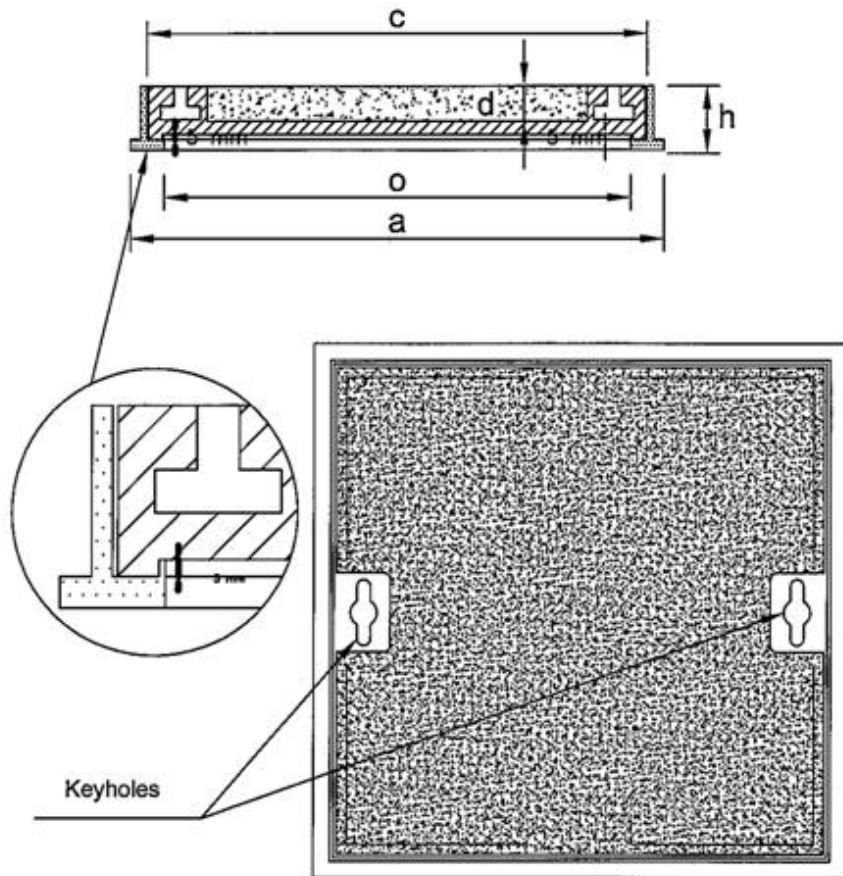
Provided with two key ways
(keyholes) to allow removal by
means of a special key or a hook.

Sealing:

Frame design allows to retain
sealing material
(see detail)

Option:

Badging: Please enquire
Other sizes: Please enquire



Ref.	oxo	cxc	axa	h	d
CRC 5050 C	500X500	550X550	600X600	100	75
CRC 4545 C	450X450	495X495	543X543	100	75
CRC 6045 C	600X450	495X641	690X540	100	75
CRC 4575 C	750X450	810X510	860X560	100	75
CRC 6060 C	600X600	650X650	720X720	100	75
CRC 7070 C	700X700	750X750	800X800	100	75
CRC 8080 C	800X800	850X850	900X900	100	75
CRC 6090C	600X900	650X950	700X1000	100	75

All dimensions are in mm

Drawing Serial No.24

CONFIDENTIAL
Property of
ChtISMa trading Ltd
Not to be used without
its permission

ChtISMa trading Ltd
IMPORTERS-EXPORTERS-AGENTS
Tel. 00357 - 25 - 395280
Fax : 00357 - 25 - 394671
E-mail: chtisma@cytanet.com.cy

Date: / /
Authorized signature