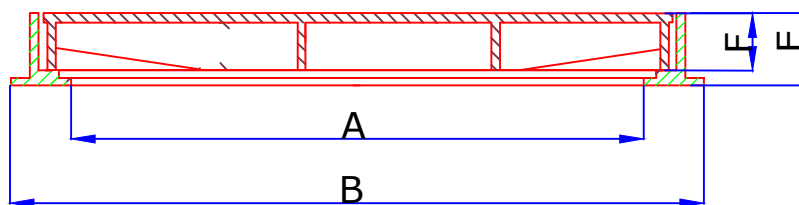
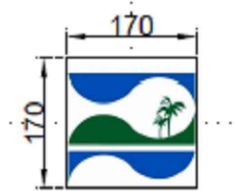


Sectional View @  
Lockable Area-A

PLAN VIEW OF FRAME & COVER



SECTION C-C



Badging Details

Covers are paint with epoxy paint 200 microns

Access covers manufactured from ductile cast iron in accordance to standards ISO 1083 (grate 500-7) and EN1563. Load classification D400 to EN124. It is provided with 2 closed keyways to allow removal by means of a hook. Frame incorporating a rubber seal to prevent noise and vibration (non-rocking). 4 anchoring holes can be fixed to the frame to brickwork as necessary.

Paint		Weight	
Paint	Expyo	Cover	85.0 kg
Bolt	M20 SS. Hex Bolt	Frame	54.0 kg

CODE	CLEAR OPENING A (mm)	OVER BASE B (mm)	FRAME HEIGHT E (mm)	DEPTH OF INSERTION F (MM)	LOADING KN
DI-33B	Ø800	Ø950	100	71	400

DATE : 17-03-23	<u>DESCRIPTION :</u> 800 MM DIA CLEAR OPENING DUCTILE IRON LOADING CLASS D 400 CIRCULAR COVER & FRAME WITH RUBBER SEAL & BOLTED	REV : 01
DRAWN BY : MC		SCALE : NTS
CHECKED BY: PC		ALL DIMENSIONS ARE IN MM
APP.BY: PC		