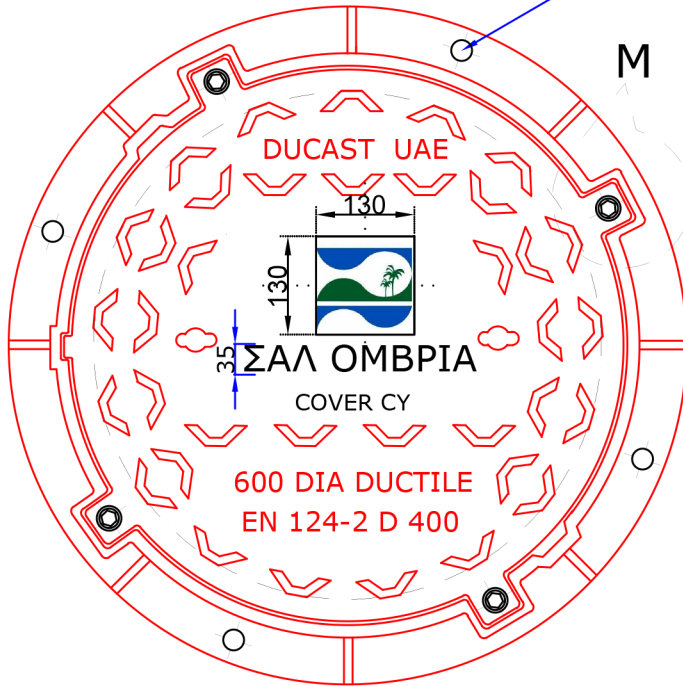


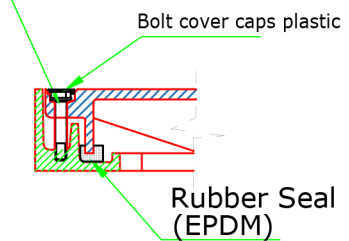


16mm Dia Anchoring
Ascast hole 4- Nos.

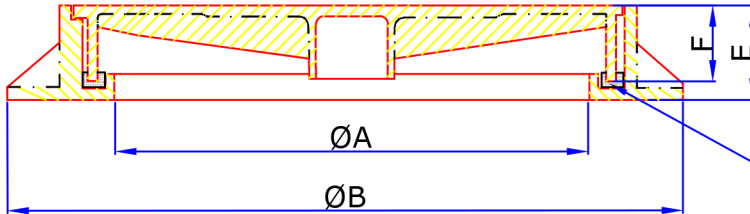


PLAN OF COVER & FRAME

M-20 SS Bolt -
(4-Nos)



Sectional View -M
Lockable Area



SECTIONAL VIEW

Rubber Seal
(EPDM)

Covers are paint with epoxy paint 200 microns

Access covers manufactured from ductile cast iron in accordance to standards ISO 1083 (grate 500-7) and EN1563. Load classification D400 to EN124. It is provided with 2 closed keyways to allow removal by means of a hook. Frame incorporating a rubber seal to prevent noise and vibration (non-rocking). 4 anchoring holes can be fixed to the frame to brickwork as necessary.

Bolt & Paint		Weight (kg)	
Bolt	M-20 SS Bolt	Cover	50.0 kg
Paint	Epoxy	Frame	31.0 kg

CODE	CLEAR OPENING Ø A (MM)	OVER BASE ØB (MM)	FRAME HEIGHT E (MM)	LOADING KN	DEPTH OF INSERTION F (MM)	STANDARD
DA-4	Ø600	Ø 800	100	400 kN	87	EN 124-2015

DATE : 13/1/2022

DRAWN BY : MC

CHECKED BY: PC

APP.BY: PC

DESCRIPTION :

600 MM DIA CLEAR OPENING DUCTILE
IRON LOADING CLASS E 400kN
CIRCULAR SINGLE SEAL COVER &
FRAME WITH RUBBER SEAL & BOLTED

REV : 01

SCALE : NTS

ALL DIMENSIONS ARE
IN MM